

The local plan also includes policies that will help the Council in responding to planning applications. They will help to –

- ensure that new development respects local distinctiveness and delivers good quality places to live
- protect the natural and historic environment, resources and address the effects of climate change
- ensure the provision of affordable and other types of housing to meet specific needs
- guide future employment and shopping proposals
- ensure that sufficient infrastructure is in place.

How do I have my say?

Your comments on the plan are invited. This is an important stage for the local plan as the Government’s Planning Inspectorate will be conducting an examination of the plan’s soundness and your responses will be considered by the appointed inspector.

Your comments can be returned by completing a response form, which is available at local libraries, the Customer Service Centre in Horne Lane and online at: www.bedford.gov.uk/localplan2035

Responses should be emailed to:
planningforthefuture@bedford.gov.uk

Or sent by post to:
**Local Plan 2035, Planning Policy Team,
Bedford Borough Council, Borough Hall, Bedford MK42 9AP.**

All responses should be made on the official form and returned by 5pm on Monday 5th March 2018.

Local Plan 2035

Planning for the future

What is the Local Plan 2035?

The Local Plan 2035 sets out how much growth and development there will be in Bedford borough until 2035 in order to meet local needs. It plans for the additional houses and facilities required to support new communities and provide jobs and services such as schools, transport and shops.

Bedford Borough Council has published a new draft local plan for six weeks of public consultation until Monday 5th March 2018. Your comments on the local plan are invited.



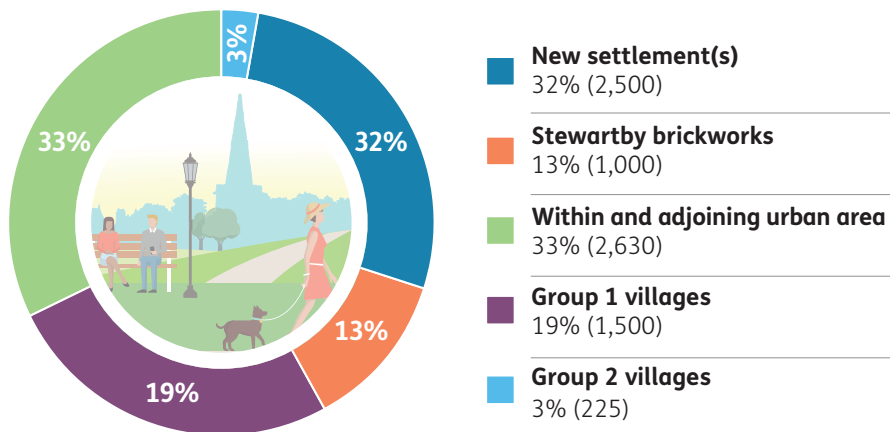
What does the local plan say?

To meet the borough's needs for the period up to 2035 the local plan proposes growth in the following locations –

- the Bedford / Kempston urban area – 2,420 homes
- suitable edge of urban sites – 210 homes
- the former Stewartby brickworks – 1,000 homes
- a new garden village at Colworth near Sharnbrook – 2,500 homes up to 2035 (and 2,000 more later)
- Bromham, Clapham and Great Barford – 500 homes each
- Carlton, Harrold, Milton Ernest, Oakley, Roxton, Turvey – 25-50 homes each.

Sites in the villages will be allocated by Parish Councils in Neighbourhood Plans (apart from in Roxton where a site is allocated in the local plan).

Where does the local plan allocate additional homes?



Local Plan Key Diagram

